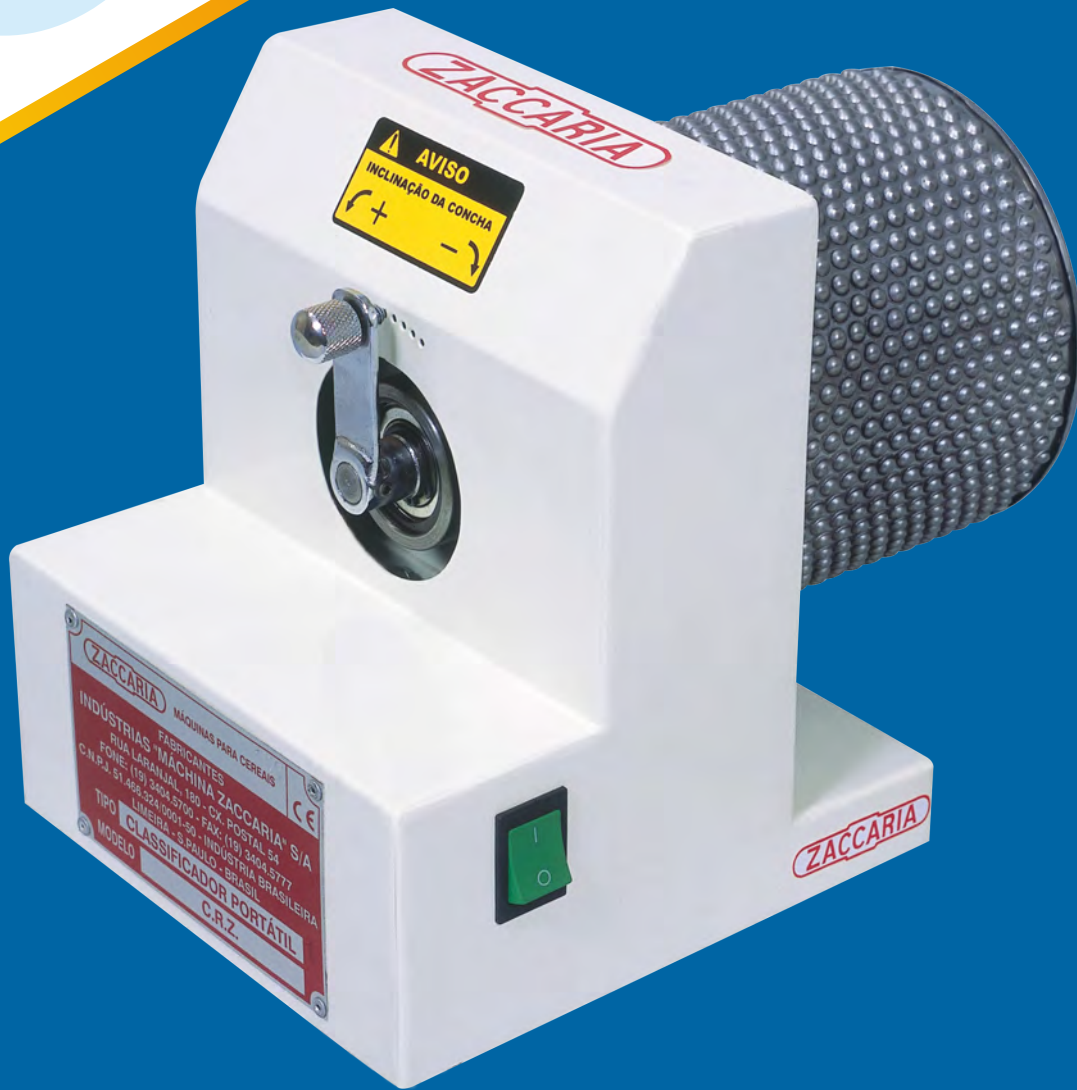


CRZ



Lab Cylinder Grader
CRZ

ZACCARIA

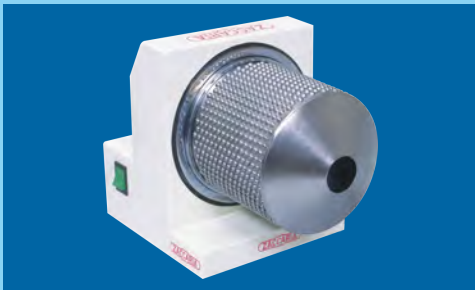
CRZ

Model:
CRZ

.....
Capacity - sample rice ounces (g):
3.5 (100)

.....
Approx. weight including one indented cylinder lbs. (kg):
19 (8.50)

.....
Machine dimensions inches (mm):
A - 7.9 (200)
B - 12.3 (314)
C - 9.4 (240)
D - 5.9 (150)



Lab Cylinder Grader CRZ

The Zaccaria Testing Grader model CRZ is a handy piece of equipment for evaluating samples by length or thickness. Since the separation principle is the same as the one used in the industrial design, it gives accurate results during every test.

This machine is essential in the rice business as, by grading the rice, it is possible to obtain the yield of the milled rice, ensuring quality of the product to be packed as is valuable for control laboratory testing of samples.

CONSTRUCTION AND FUNCTION CHARACTERISTICS

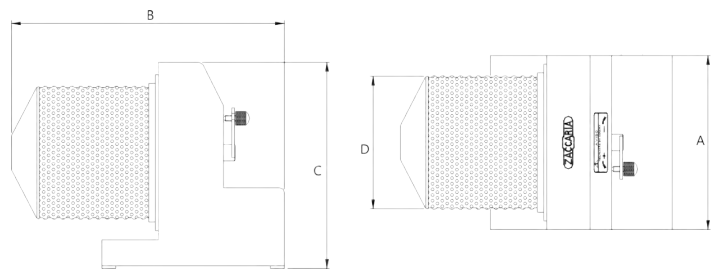
- Separation of broken rice from whole grain rice in the indented cylinder;
- Separation of chalky, immature or red rice through a rotating perforated cylinder (optional);
- Compact design;
- Includes one indented cylinder (normally 14/64" or 5.5 mm indent size) as standard.

FEATURES

- Accurate and uniform test results;
- Easy initial setup;
- Easy of operation, maintenance and transportation.

OPTIONAL EQUIPMENT

- Digital scale;
- Indented cylinders of different size indents available;
- Set of thickness grading cylinders of several different size slots available.



ZACCARIA

OUR EXPERIENCE MAKES THE DIFFERENCE

ZACCARIA USA

4704 Glenwood Ln. Anna, Texas 75409 USA

Tel: 1 (972) 924-3443 | Fax: 1 (972) 499-2379

Email: ZaccariaUSA@gmail.com | www.ZaccariaUSA.com



.....
Indústrias Machina Zaccaria S/A reserves the right to change the information stated in this catalogue, including the color and details of the machine, without prior notice.